

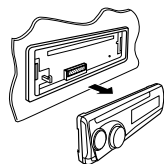
JVC

SCHEMATIC DIAGRAMS

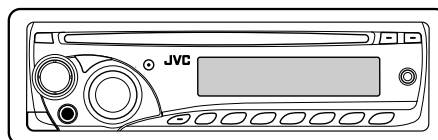
CD RECEIVER

**KD-G140J, KD-G240J, KD-G244UI, KD-G245U
KD-G245UN, KD-G245UT, KD-G245UH, KD-G248UF
KD-G341E, KD-G341EX, KD-G341EY, KD-G341EU
KD-G342E, KD-G342EX, KD-G342EY, KD-G342EU
KD-G343E, KD-G343EX, KD-G343EY, KD-G343EU
KD-G347SEE, KD-G347BEE, KD-G394UI, KD-G395U
KD-G395UN, KD-G395UT, KD-G395UH, KD-G396U
KD-G396UN, KD-G396UT, KD-G396UH, KD-G398UF
KD-G396SUI, KD-G299UR**

DVD-ROM No.SML2008Q1



only for
KD-G140/KD-G240
KD-G394/KD-G395
KD-G396/KD-G398
KD-G299



only for
KD-G347



only for
KD-G341
KD-G342
KD-G343
KD-G347

WMA MP3

only for
KD-G240/KD-G341/KD-G342
KD-G343/KD-G347/KD-G394
KD-G395/KD-G396/KD-G398
KD-G299



only for
KD-G140
KD-G240
KD-G299

Lead free solder used in the board (material : Sn-Ag-Cu, melting point : 219 Centigrade)

Lead free solder used in the board (material : Sn-Cu, melting point : 230 Centigrade)

Contents

| | |
|-----------------------------------|-----|
| Block diagram | 2-1 |
| Standard schematic diagrams | 2-3 |
| Printed circuit boards | 2-8 |

Safety precaution

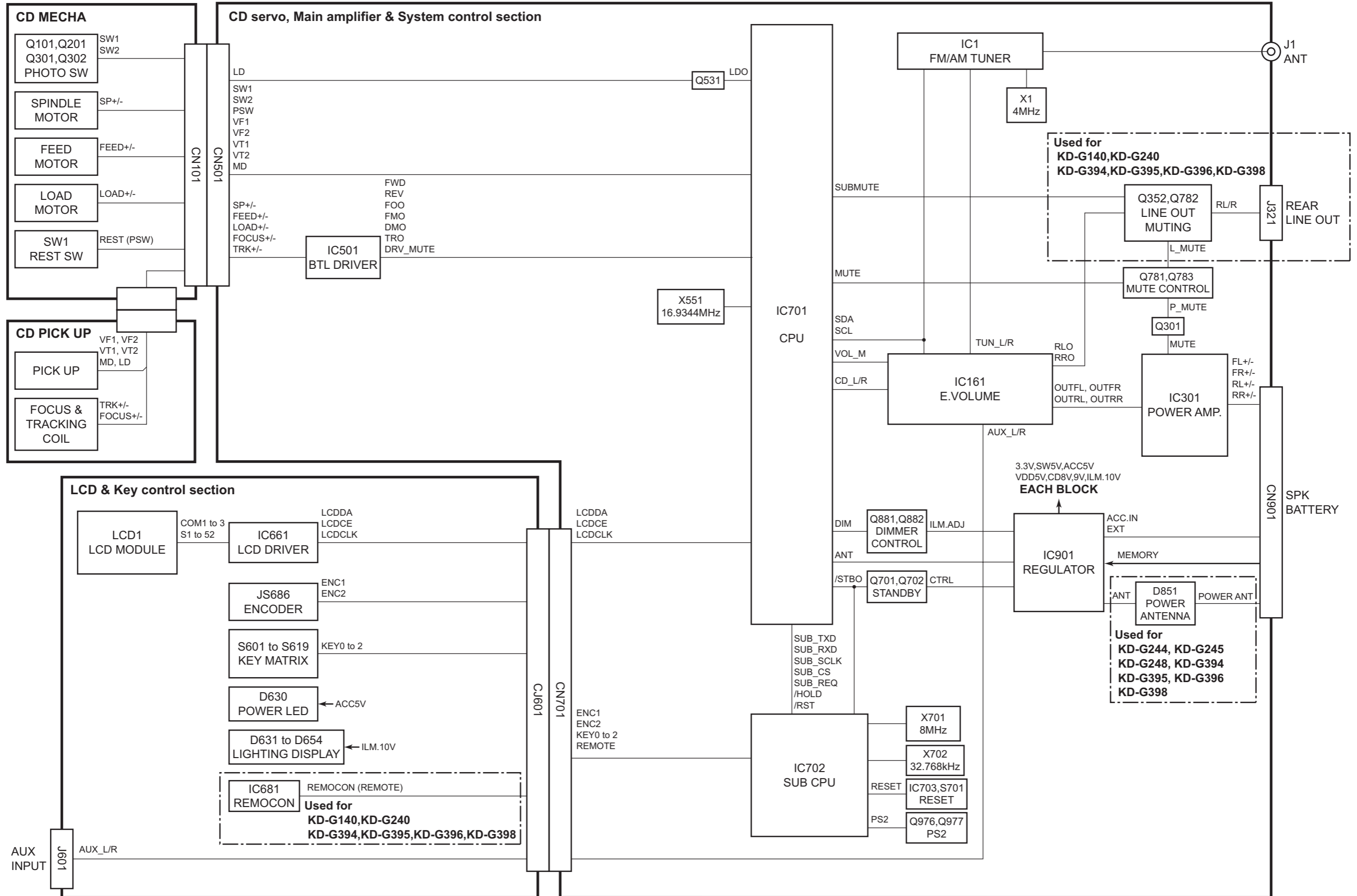


CAUTION Burrs formed during molding may be left over on some parts of the chassis. Therefore, pay attention to such burrs in the case of performing repair of this system.

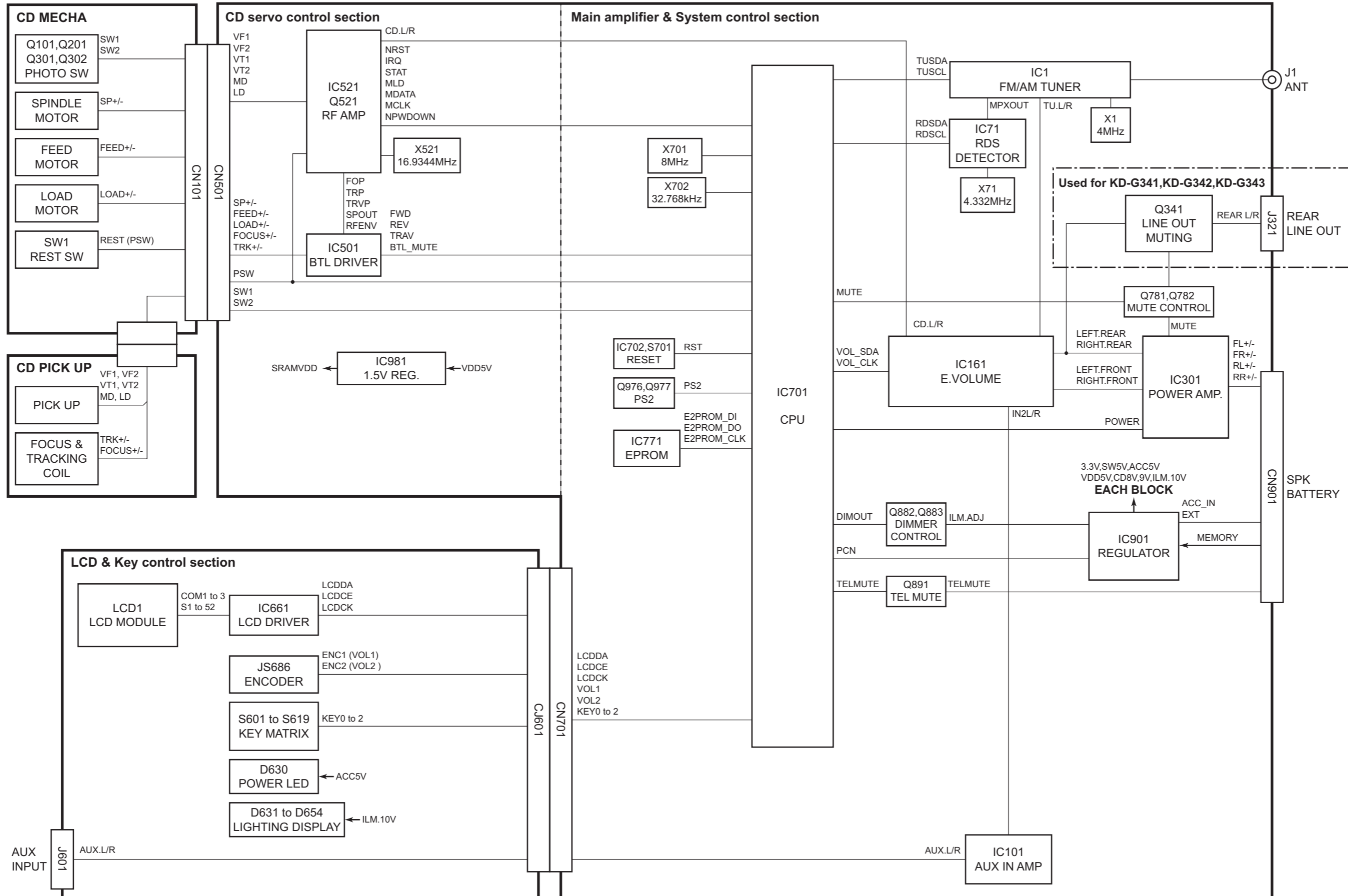


CAUTION Please use enough caution not to see the beam directly or touch it in case of an adjustment or operation check.

Block diagram (For KD-G140,KD-G240,KD-G244,KD-G245,KD-G248,KD-G394,KD-G395,KD-G396 and KD-G398)

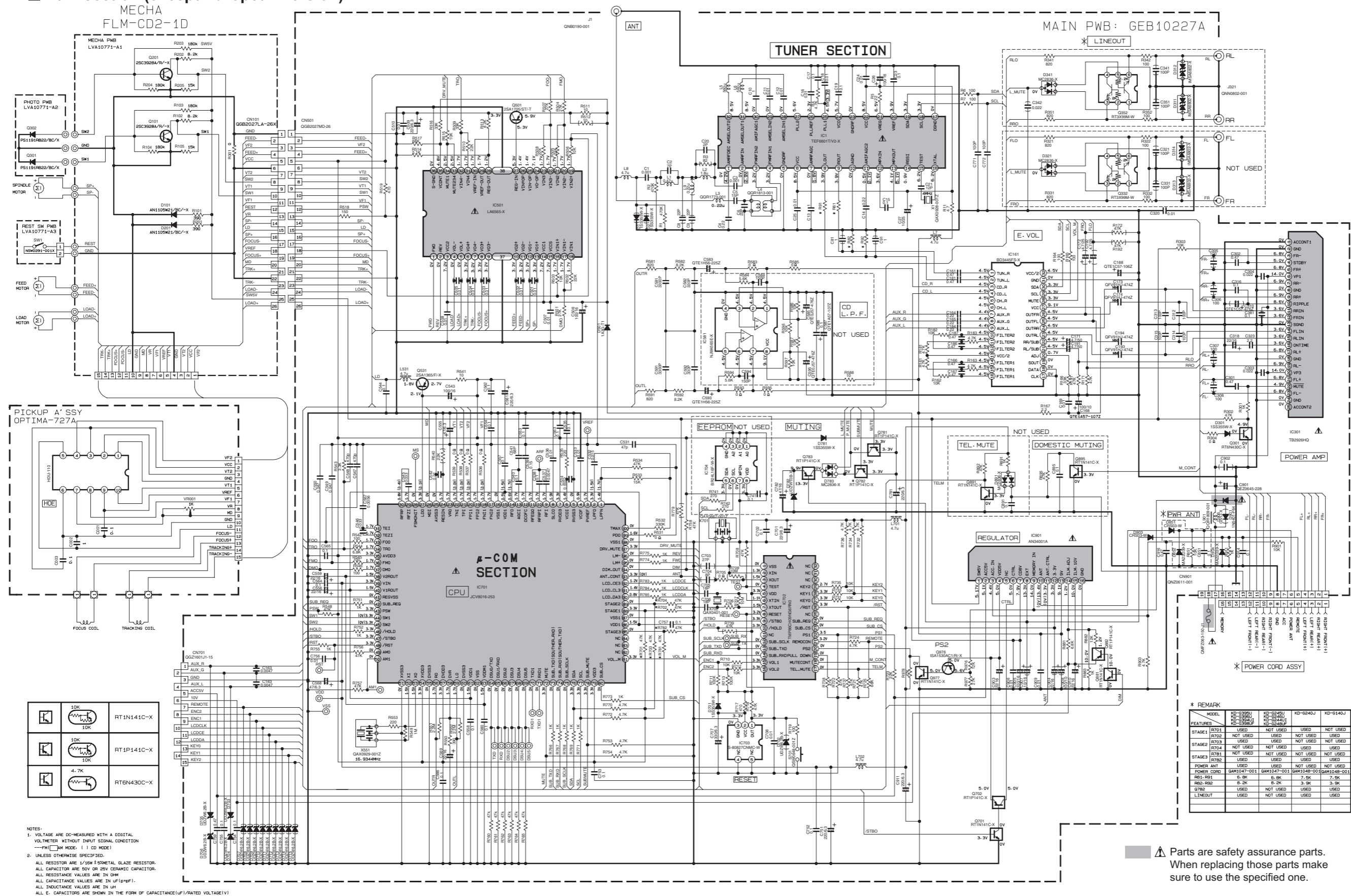


Block diagram (For KD-G341,KD-G342,KD-G343,KD-G347S and KD-G347B)

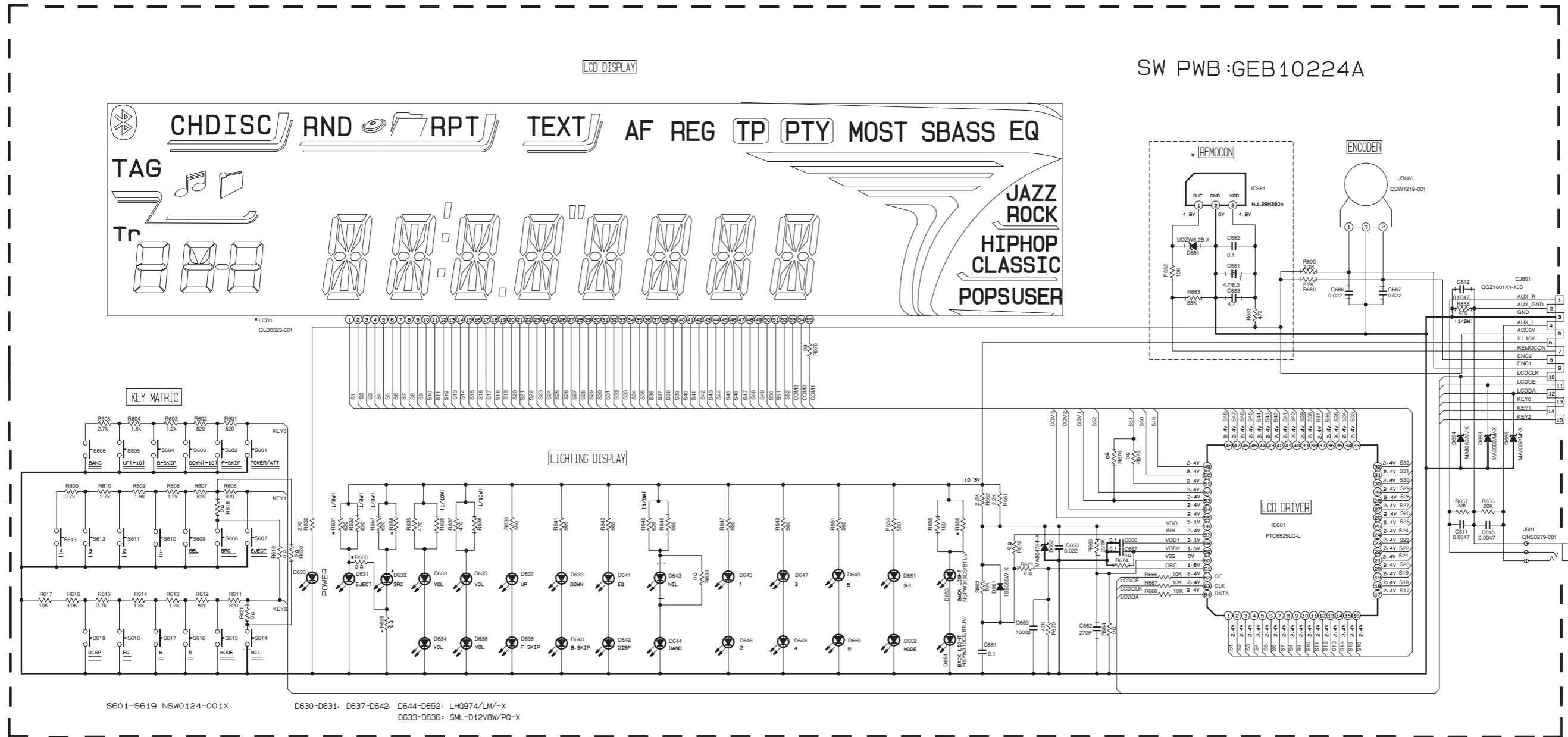


Standard schematic diagrams

Main section (except European version)



■ LCD & Key control section (except European version)



S601-S619 NSW0124-001X

D630-D631, D637-D642, D644-D652: LH974/LM-X
D633-D636: SML-D12V8W/PQ-X

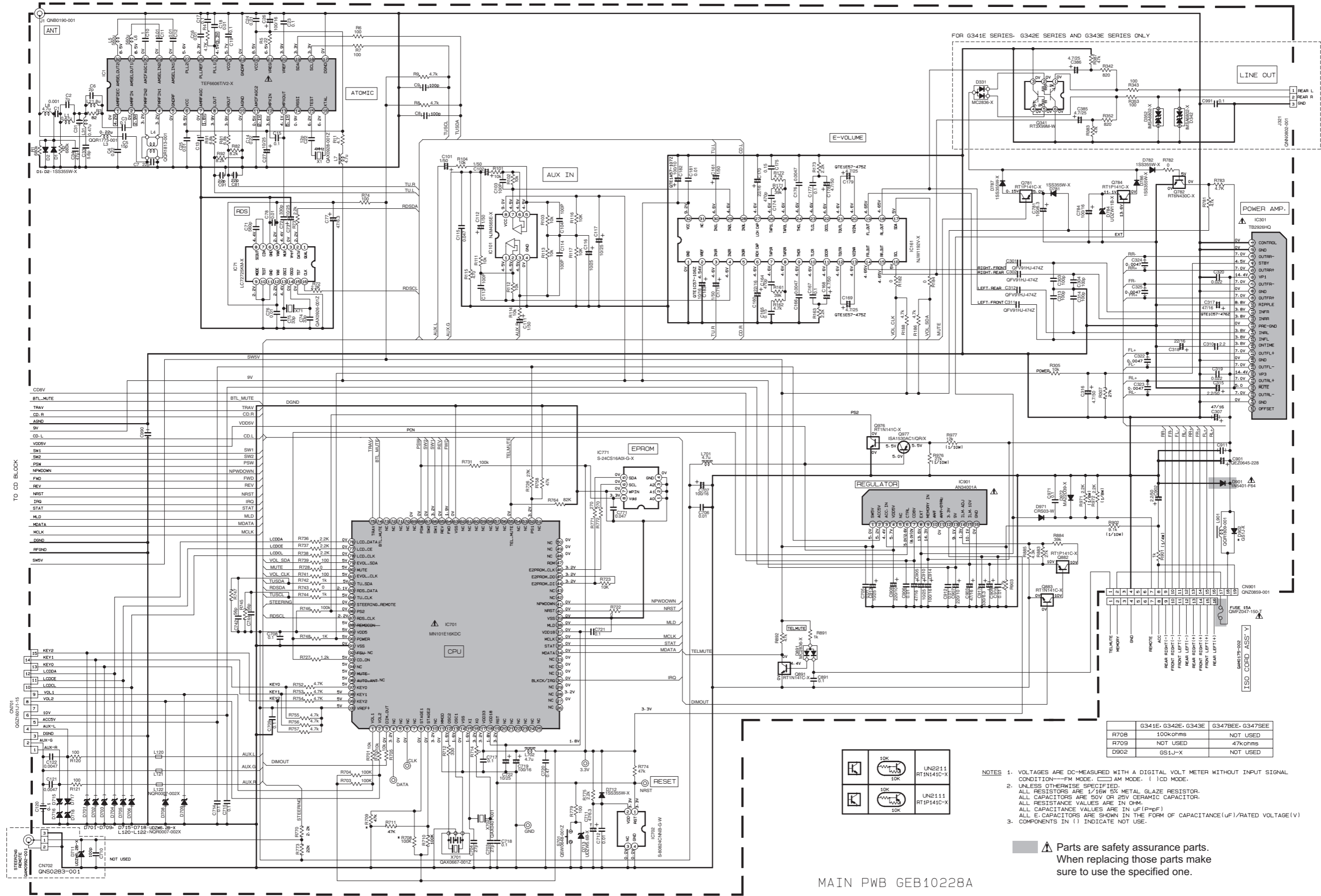
REMARKS

| | KD-G395U | KD-G140J | KD-G245U | KD-G244U1 |
|----------------|-------------|-----------------|-----------------|-------------|
| | KD-G396U | KD-G240J | SERIES | KD-G248UF |
| | KD-G394U1 | | | |
| | KD-G396UF | | | |
| LED BRIGHTNESS | D632 | NEC88205/WPGR/X | NEC88205/WPGR/X | LH974/LM-X |
| | D658 | 1.3K | 1.3K | 560 |
| | D659 | IN USE | IN USE | NOT IN USE |
| | D660 | NOT IN USE | NOT IN USE | IN USE |
| | D631 | IN USE | IN USE | NOT IN USE |
| | D656 | 200 | 180 | 200 |
| REMOCON | IN USE | IN USE | NOT IN USE | NOT IN USE |
| LCD | QLD0523-001 | QLD0530-001 | QLD0523-001 | QLD0523-001 |

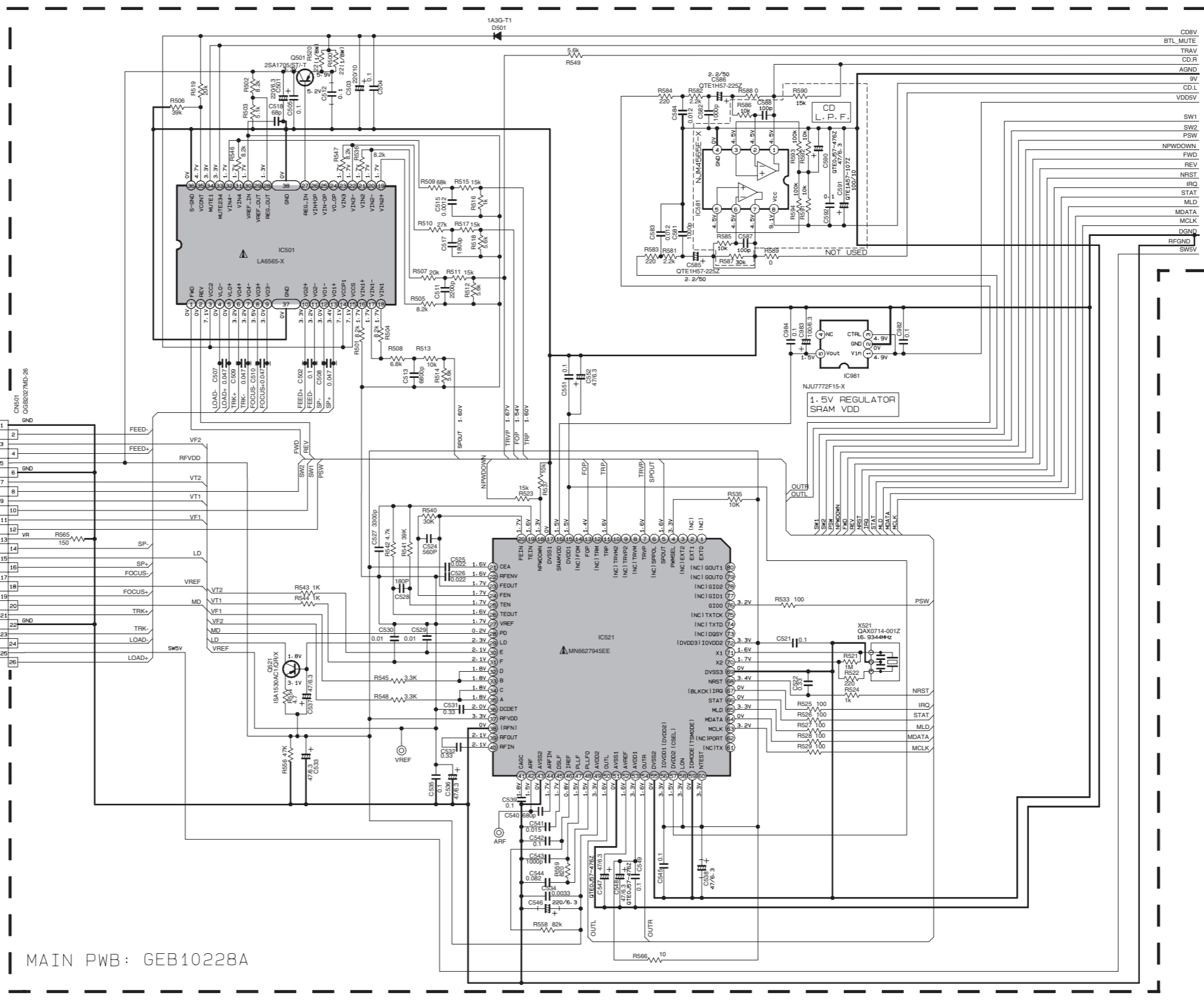
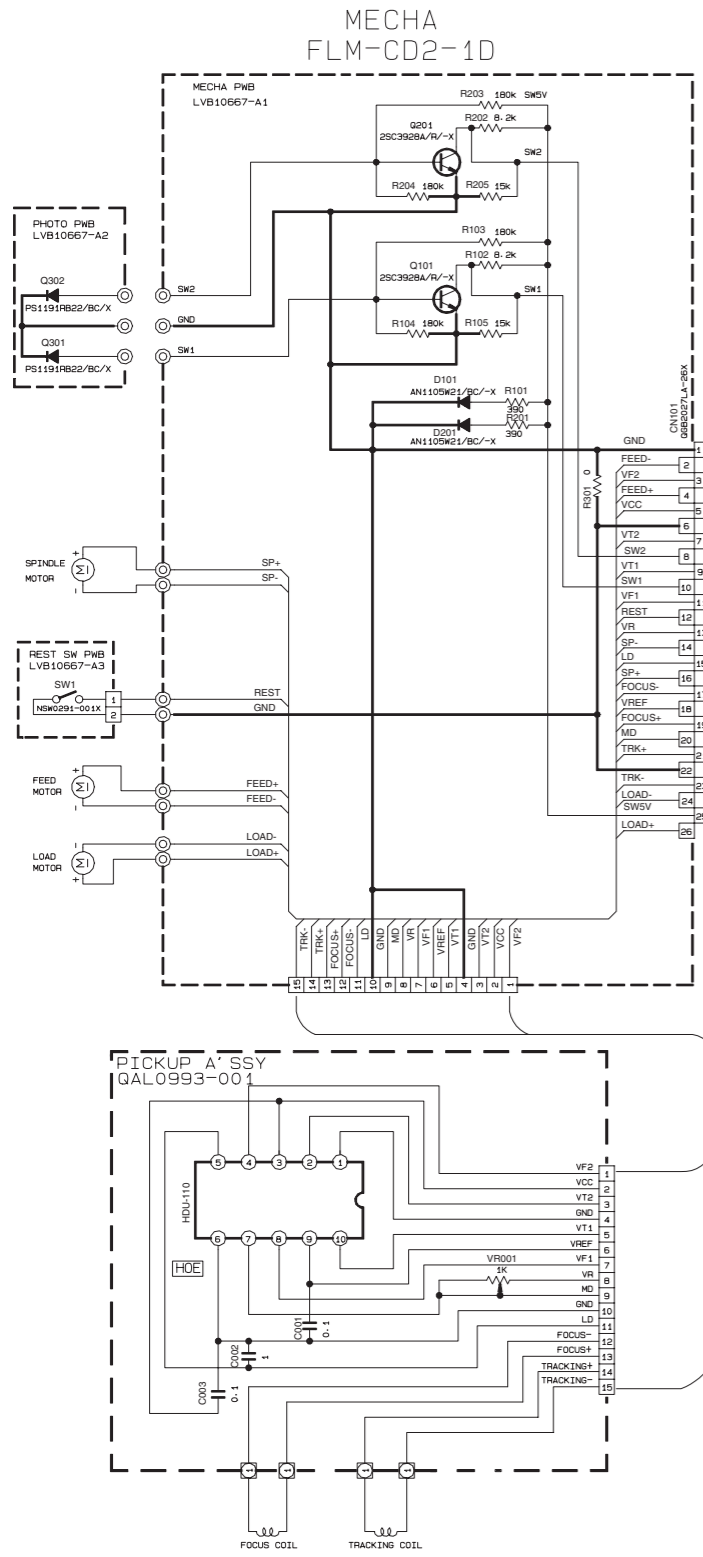
NOTES

- VOLTAGES ARE DC-MEASURED WITH A DIGITAL VOLT METER WITHOUT INPUT SIGNAL.
- UNLESS OTHERWISE SPECIFIED, ALL RESISTORS ARE 1/16W ±5% METAL GLAZE RESISTOR. ALL CAPACITORS ARE 50V OR 25V CERAMIC CAPACITOR. ALL RESISTANCE VALUES ARE IN OHM. ALL CAPACITANCE VALUES ARE IN uF(p=pF) ALL E. CAPACITORS ARE SHOWN IN THE FORM OF CAPACITANCE(uF)/RATED VOLTAGE(V) T --- TANTAL CAPACITOR.
- COMPONENTS IN () INDICATE NOT USE.

Main section (for European version)



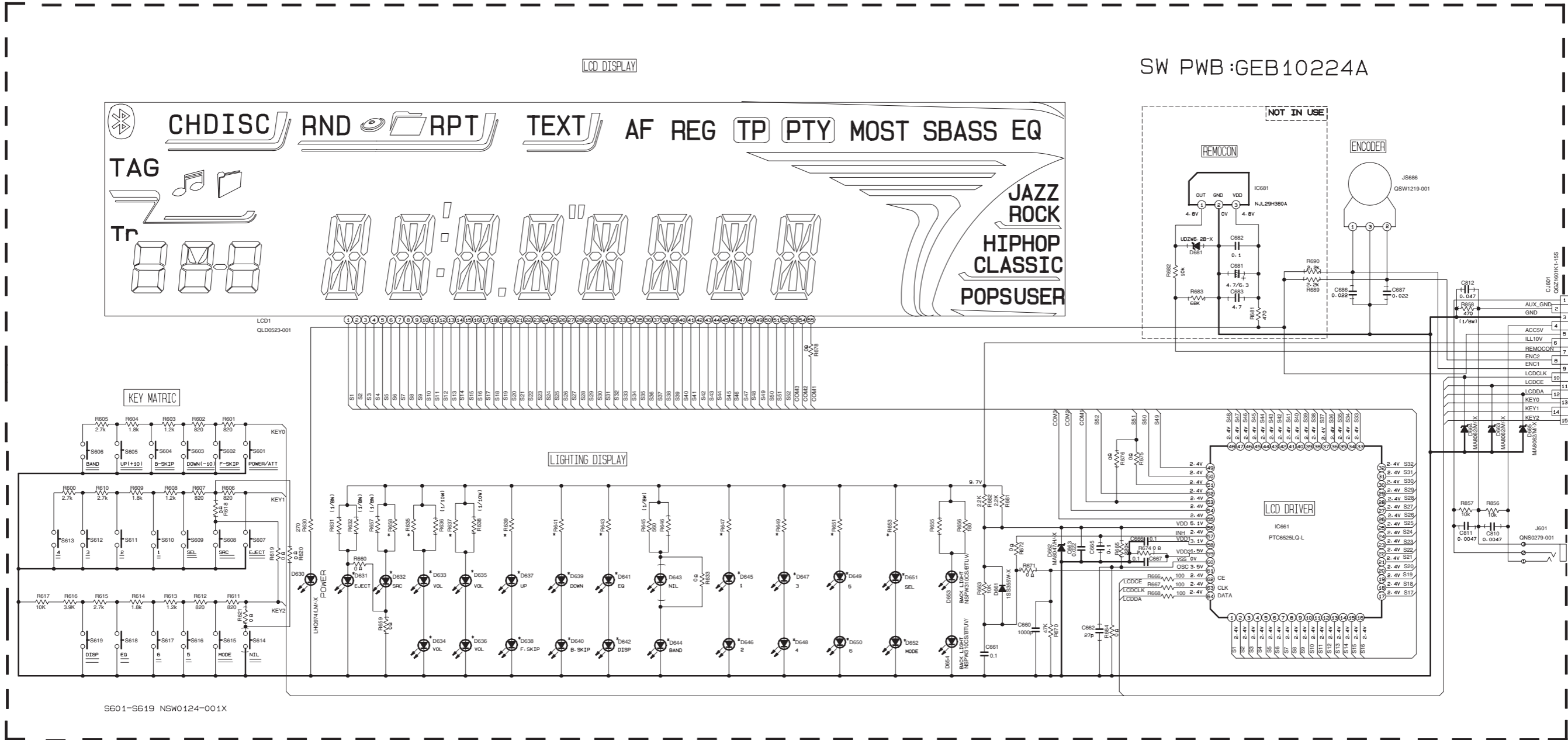
■ CD section (for European version)



- NOTES:
- VOLTAGE ARE DC-MEASURED WITH A DIGITAL VOLTMETER WITHOUT INPUT SIGNAL CONDITION — CD MODE.
 - UNLESS OTHERWISE SPECIFIED, ALL RESISTOR ARE 1/16W ±5%METAL GLAZE RESISTOR. ALL CAPACITOR ARE 50V OR 25V CERAMIC CAPACITOR. ALL RESISTANCE VALUES ARE IN OHM ALL CAPACITANCE VALUES ARE IN uF (p=PF). ALL INDUCTANCE VALUES ARE IN uH ALL E. CAPACITORS ARE SHOWN IN THE FORM OF CAPACITANCE(uF)/RATED VOLTAGE(V)

▲ Parts are safety assurance parts. When replacing those parts make sure to use the specified one.

■ LCD & Key control section (for European version)



S601-S619 NSW0124-001X

| *REMARKS | KD-G341E | KD-G342E KD-G343E KD-G347BEE KD-G347SEE |
|----------------------------------|----------------|--|
| D631-D642 D644-D652 | LNJ30808/1-3/X | LS997L/KL-/X |
| R635-R637 | 390Ω | 430Ω |
| R639-R641-R647 R649-R651-R653 | 430Ω | 510Ω |
| R643-R658 | 390Ω | 510Ω |

NOTES

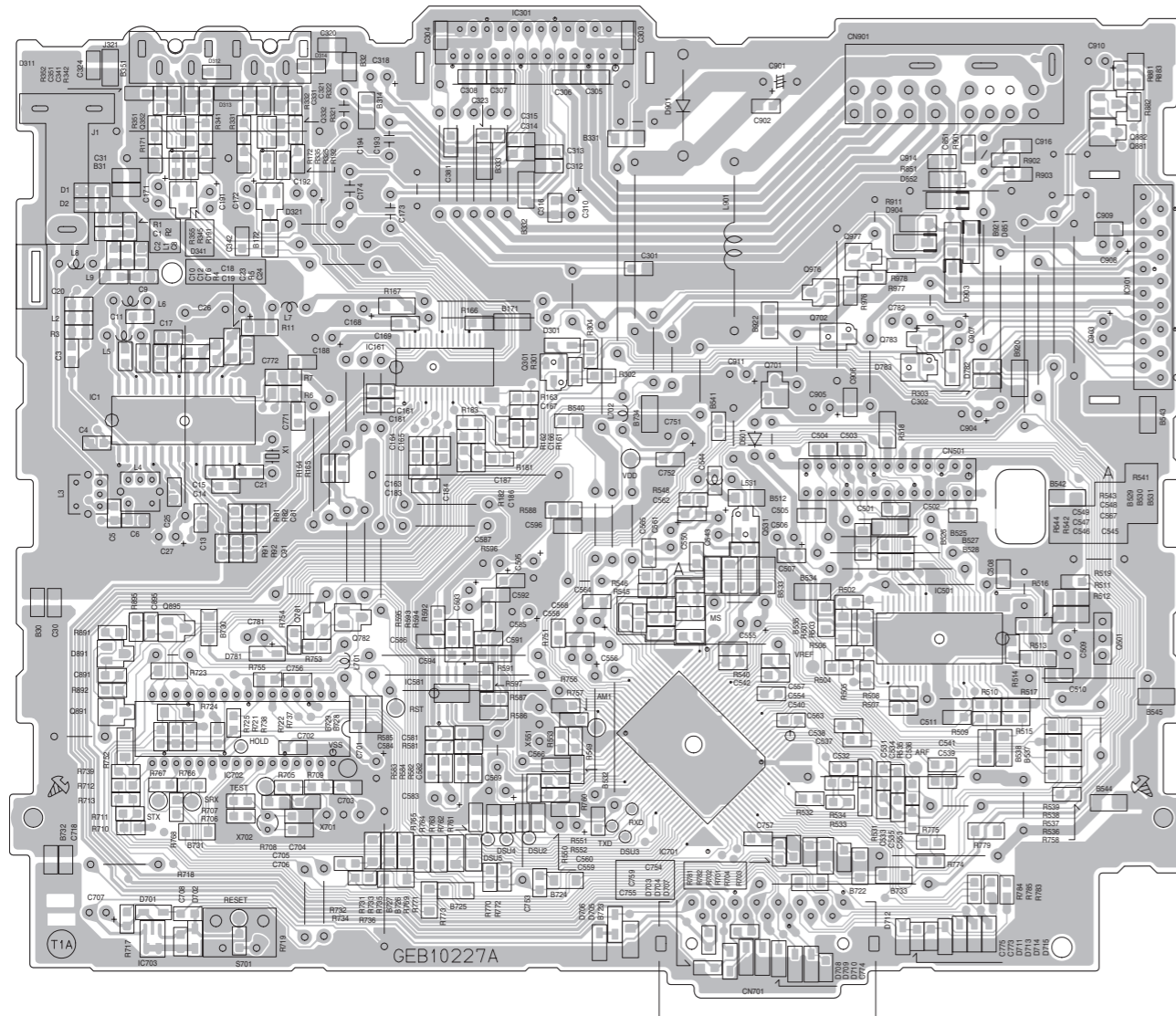
- VOLTAGES ARE DC-MEASURED WITH A DIGITAL VOLT METER WITHOUT INPUT SIGNAL.
- UNLESS OTHERWISE SPECIFIED, ALL RESISTORS ARE 1/16W ±5% METAL GLAZE RESISTOR. ALL CAPACITORS ARE 50V OR 25V CERAMIC CAPACITOR. ALL RESISTANCE VALUES ARE IN OHM. ALL CAPACITANCE VALUES ARE IN uF(P=pF) ALL E. CAPACITORS ARE SHOWN IN THE FORM OF CAPACITANCE(uF)/RATED VOLTAGE(V) T --- TANTALUM CAPACITOR.
- COMPONENTS IN () INDICATE NOT USE.

Printed circuit boards

■ Main board (except European version)

Lead free solder used in the board (material : Sn-Ag-Cu, melting point : 219 Centigrade)

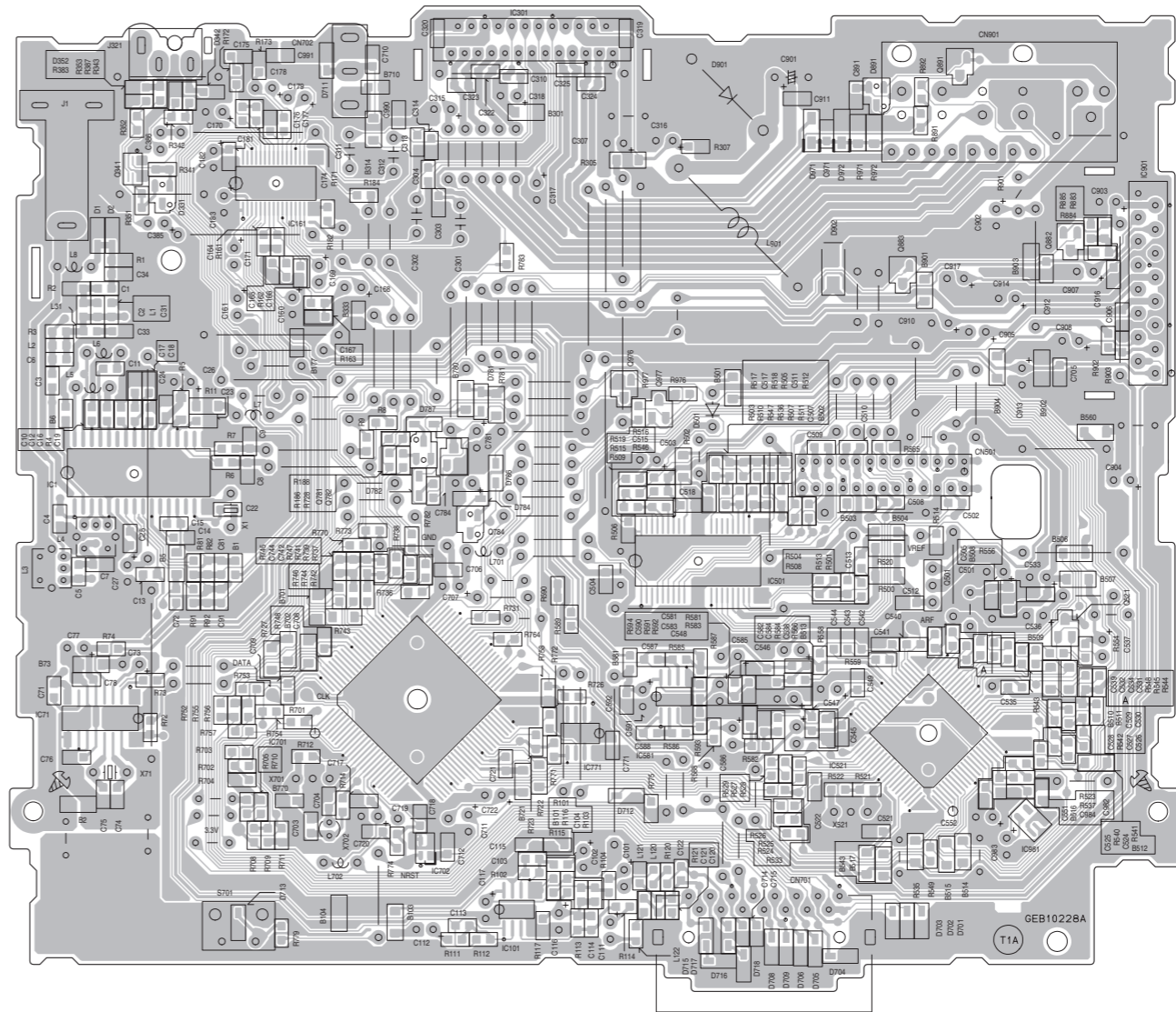
Lead free solder used in the board (material : Sn-Cu, melting point : 230 Centigrade)



■ Main board (for European version)

Lead free solder used in the board (material : Sn-Ag-Cu, melting point : 219 Centigrade)

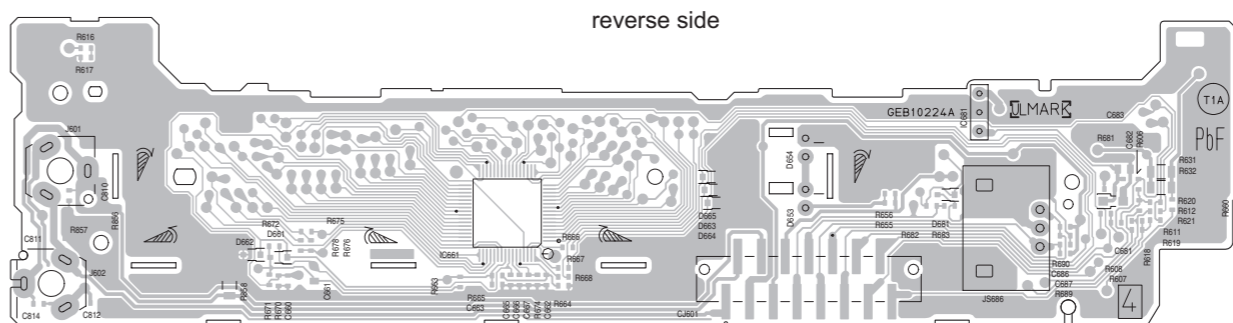
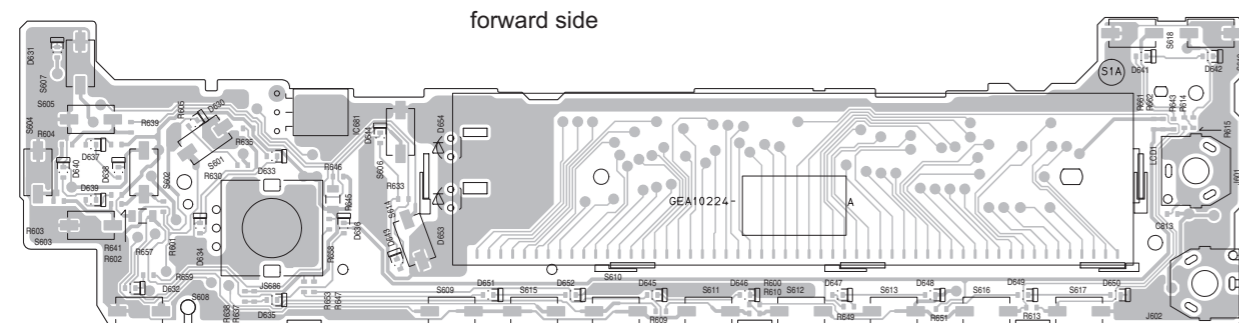
Lead free solder used in the board (material : Sn-Cu, melting point : 230 Centigrade)



■ Switch board (common use)

Lead free solder used in the board (material : Sn-Ag-Cu, melting point : 219 Centigrade)

Lead free solder used in the board (material : Sn-Cu, melting point : 230 Centigrade)



< MEMO >

JVC

Victor Company of Japan, Limited

Mobile Entertainment Business Group Mobile Entertainment Category 10-1, 1chome, Ohwatari-machi, Maebashi-city, Gumma-ken, 371-8543, Japan

(No.MA372SCH<Rev.002>)



Printed in Japan
VPT